

KENNETH E. ADUM K-8 MAGNET SCHOOL

COMING AUGUST 2024

Kenneth E. Adum K-8 Magnet School is the newest addition to Hillsborough County Public Schools. The school is located in the South Tampa area and will officially open on August 12, 2024.

Adum K-8 will have an International Studies focus and will work to become an International Baccalaureate (IB) candidate school.

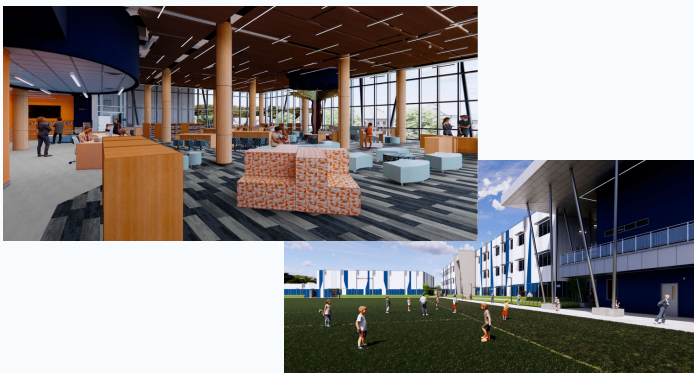
The school will roughly have 1,800 students and 120 staff members.

The first year it will host students K – grade 7, and then will expand to include 8th grade in 2025.

The district is recommending the start time be 8 a.m. However, all start times must go before the School Board for approval in the spring.

Uniforms will be required for all students. The school/uniform colors in addition to the mascot must also be approved by the School Board.

In addition to the K-8 classrooms, Adum will have two pre-kindergarten classrooms. There will be a total of 36 seats.



NAMESAKE OF THE SCHOOL

On October 17, 2023, the Hillsborough County School Board voted to name our new K-8 magnet school after Kenneth E. Adum.

Mr. Adum worked for HCPS for 37 years. During his tenure in the district, he was named Principal of the Year three times and also served as a regional superintendent for three years before retiring in 2006.

Mr. Adum passed away in April 2021 after a long battle with cancer.

HOW CAN MY STUDENT ATTEND?

Kenneth E. Adum K-8 is a Magnet School. Interested families must apply during the School Choice and Magnet Application Window, which opens several times throughout the year.

For the next upcoming application period or to apply, families can visit hillsboroughschools.org/magnet.

FREQUENTLY ASKED QUESTIONS

WILL PRE-KINDERGARTEN BE AVAILABLE?

Yes, VPK will be available at Adum K-8. It is a separate application process, not run through the Choice and Magnet Application Window.

Two pre-kindergarten blended classes will be offered. Each class will have up to 18 students (10 VPK, 8 ESE, one teacher, and two aides).

Families must first register through the Early Learning Coalition of Hillsborough County at ELCHC.org, then they can register at the school site.

For more information, please visit hillsboroughschools.org/vpk.

Note: Families will have to fill out a Magnet Application when it comes to apply for kindergarten

WILL THERE BE A GIFTED PROGRAM?

Yes, Adum K-8 will offer AGP services to its gifted students.

WILL ADUM K-8 OFFER EXCEPTIONAL STUDENT EDUCATION SERVICES?

ESE services will be offered in pre-kindergarten to seventh grade for the 2024-2025 school year. Eighth grade will be added during the 2025-2026 school year.

Families can apply via school choice during the open application window.

The full-time programs from Lanier Elementary and Monroe Middle will be moved to Adum K-8.

Specialized transportation will be provided for students in the full-time program.

The school will also have a VPK/ESE Blend classroom with Special Education Services and for typical peers.

WHEN CAN FAMILIES TOUR THE SCHOOL CAMPUS?

The school is still in the building process. Once the school receives the Certificate of Occupancy, meaning the keys can be handed over to administration, staff will be allowed in to get rooms ready, and then Principal Weaver will communicate with all families about an open house.

WILL MIDDLE SCHOOL STUDENTS HAVE THE OPPORTUNITY TO PLAY SPORTS?

Once eighth grade is added, athletic programs will be offered.

In the first year, the school can establish intramural programs through HOST as an option.

When sports are offered, we offer basketball, volleyball, track, soccer and flag football for girls and boys.

WILL THERE BE BEFORE AND AFTER SCHOOL CARE?

Yes, before and after school services (HOST) will be offered at Adum K-8.

For more information about the HOST Program or registration details, please visit hillsboroughschools.org/host.

HOW DOES THE APPLICATION PROCESS WORK?

Interested families can apply during an open Choice and Magnet Application Window. The application is done by a lottery system.

Once offers are made available, families will then be notified via email and phone of the results. You will then have a window of time during which you may respond online to accept any offer you may have received.

It does not matter when your application is submitted. There is no first come, first served process for applications.

During an application window, families can apply to up to three elementary magnet schools and five middle magnet schools. Magnet Schools and non-Magnet school options are NOT ranked on the application—you can receive an offer to any school (or no school) listed on your application.

If you are only interested in one specific school, list only that school and no alternatives since there is a chance only one offer may be given.

Additional weighting is provided to the applications of siblings on the elementary and middle school levels only when one sibling is currently enrolled for the school year. This additional weight is not a guarantee.

**FOR MORE FAQs AND INFORMATION,
PLEASE VISIT HILLSBOROUGHSCHOOLS.ORG/ADUM.**